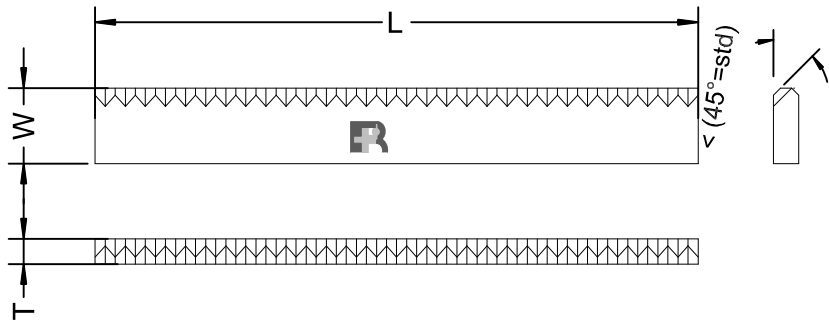
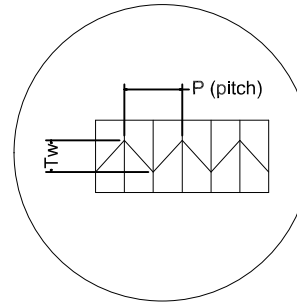


### Zigzag blade

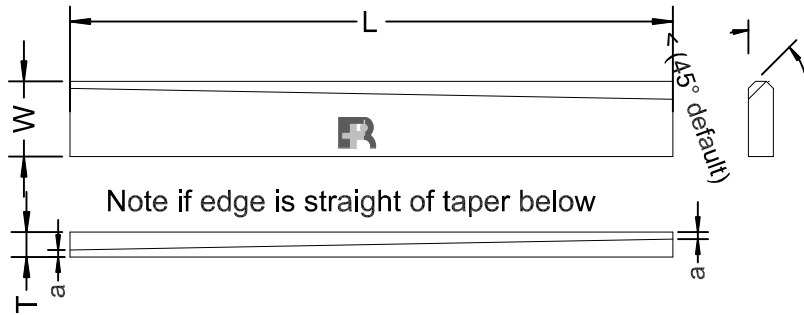


L =  
T =  
W =  
< =  
P =  
Tw =  
Mat = HSS



please sketch any additional features  
note and critical dimensions

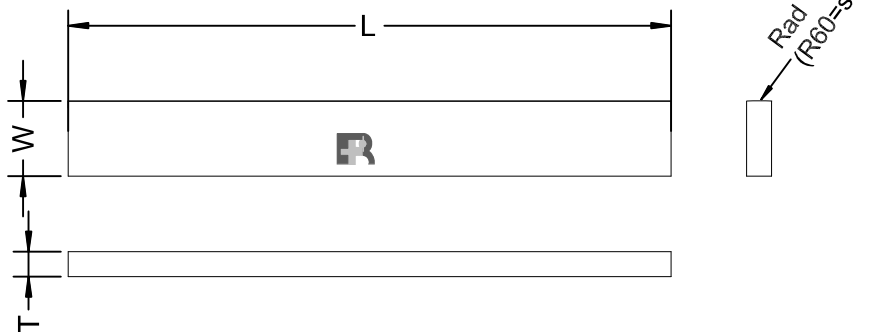
### Cutting blade



L =  
T =  
W =  
< =  
straight edge  
or  
taper edge, a =  
Mat = HSS / TC

Note if edge is straight or taper below

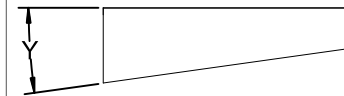
### Anvil



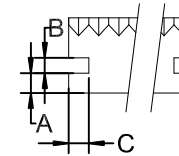
L =  
T =  
W =  
Rad\* =  
Mat = HSS / TC

\* Radius can be checked by clocking the change in width from side to the centre of the rad (across the thickness) then drawing a 3 point circle

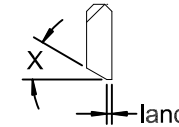
### Additional features



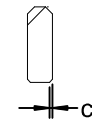
Taper base  
Y =  
(note, this is an accurate taper and should be clocked over max length)



Ejection slots  
for screwdriver  
(laser cut) A =  
B =  
C =



Setting taper  
X =  
Land =



Chamfer base  
Cf =

© Copyright Renlaw (Pty) Ltd

**Renlaw (Pty) Ltd**

TITLE  
**Flowrapper capture form**

|                   |           |                    |       |
|-------------------|-----------|--------------------|-------|
| SIZE<br><b>A4</b> | CAGE CODE | DWG NO<br><b>R</b> | REV   |
| SCALE             |           | © Copyright Renlaw | SHEET |